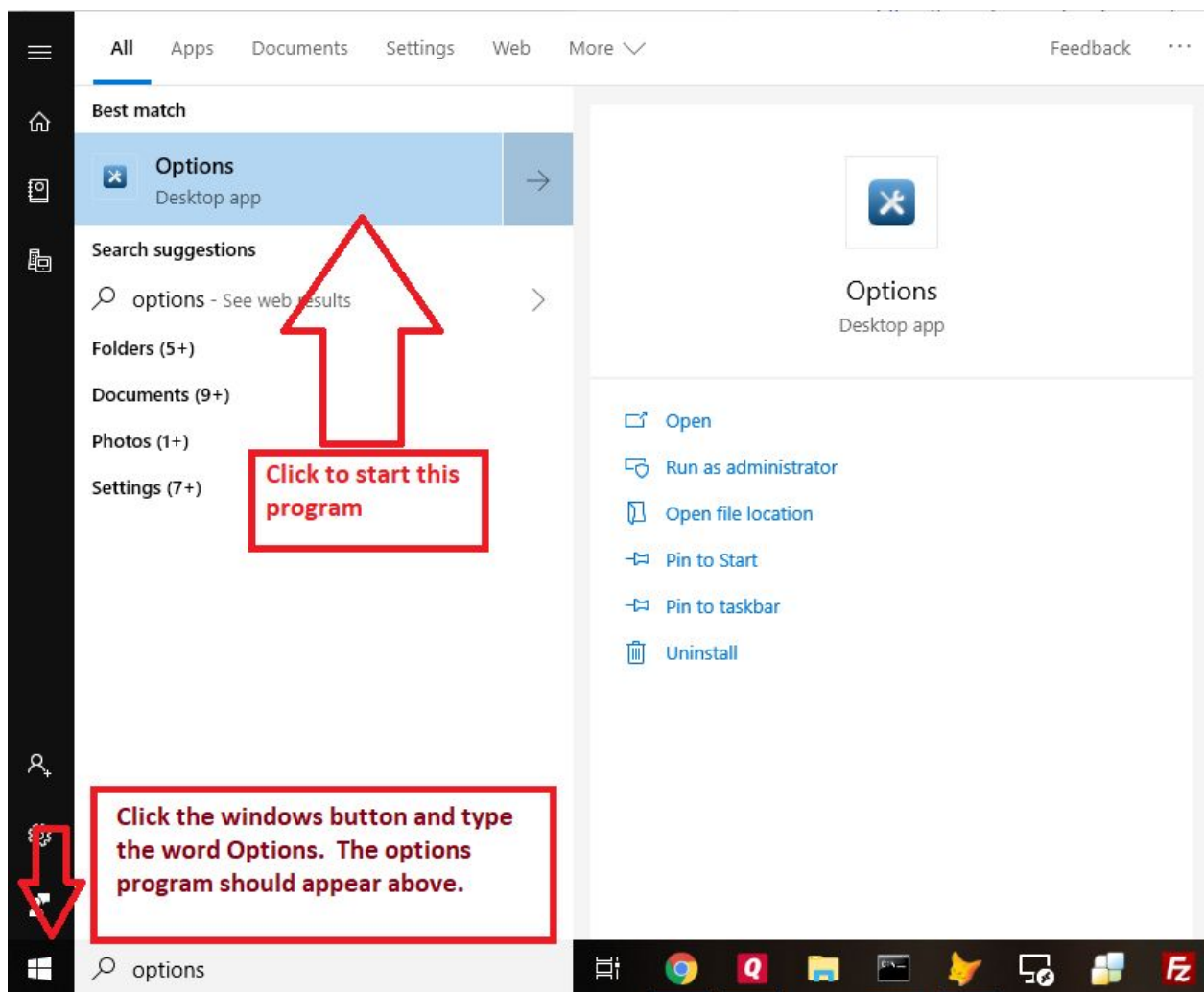


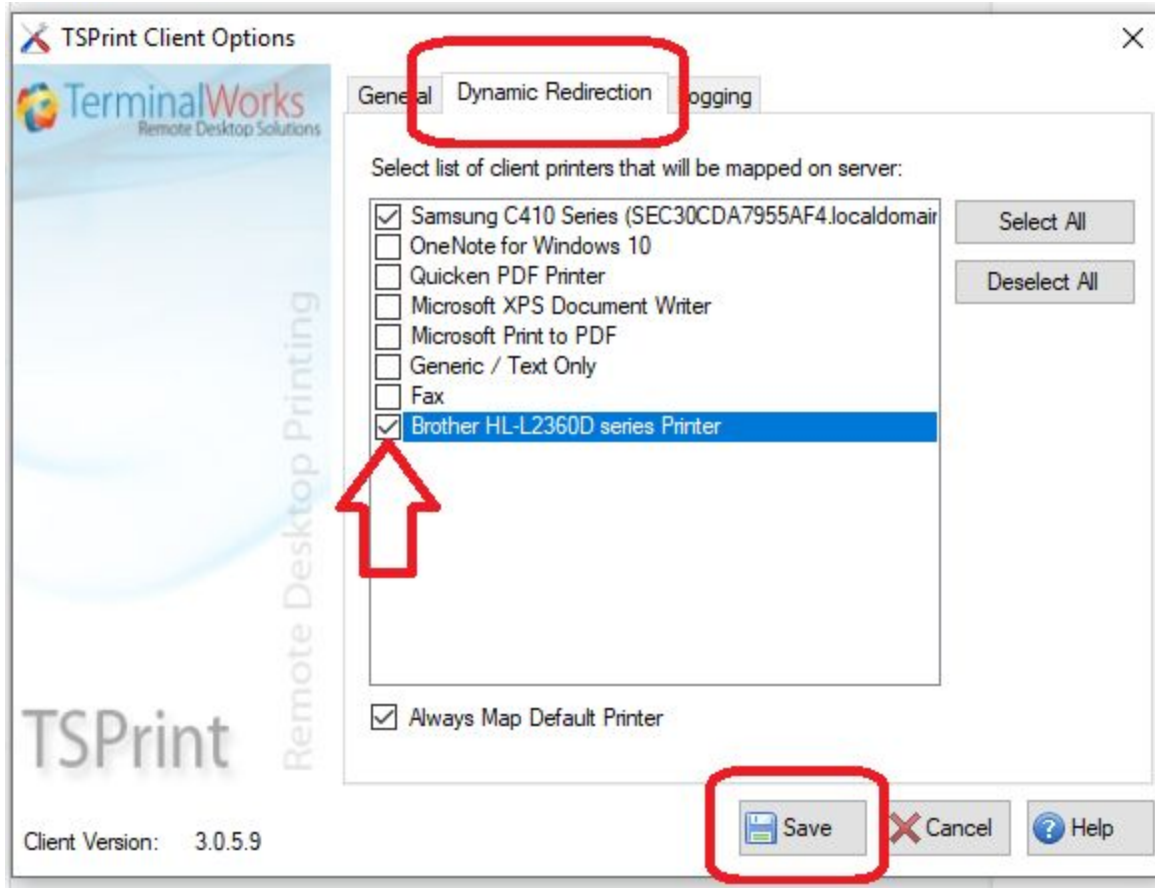
In addition to the default “Universal Printer”, NEMRC Cloud can be set up to display and use your local printers. In order to do this you need to have your local administrator setup a “client” on your computer. The client we use can be downloaded from the below link and clicking the red Client Download button in the red Download section.

<https://www.terminalworks.com/remote-desktop-printing/downloads>

Once downloaded, you will need to close any of your current cloud connections then run the downloaded program. Once installed you can search for and run the “Options” program and click the Dynamic redirection tab and select the printers that you want to show in the NEMRC Cloud.



Once the application is started click the “Dynamic Redirection” tab, check off the printers you want to appear in the NEMRC Cloud and then click Save.



You can revisit this at any time in the future to “tweak” your own NEMRC Cloud experience.

Then simply start your NEMRC cloud connection and when prompted for a printer select your printer.

The full documentation for the full printing solution is located below. It is geared toward IT pros.
<https://www.terminalworks.com/remote-desktop-printing/downloads/documentation/TSPrintGuide.pdf>